

**Legend**


Devil Canyon Botanical Study Area

Properly Functioning Condition (PFC) Rating  
 Functional - at risk  
 Nonfunctional

Lentic  
 Lotic

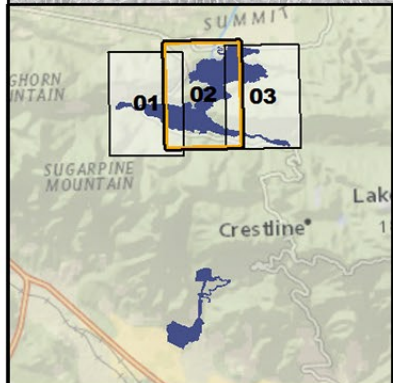
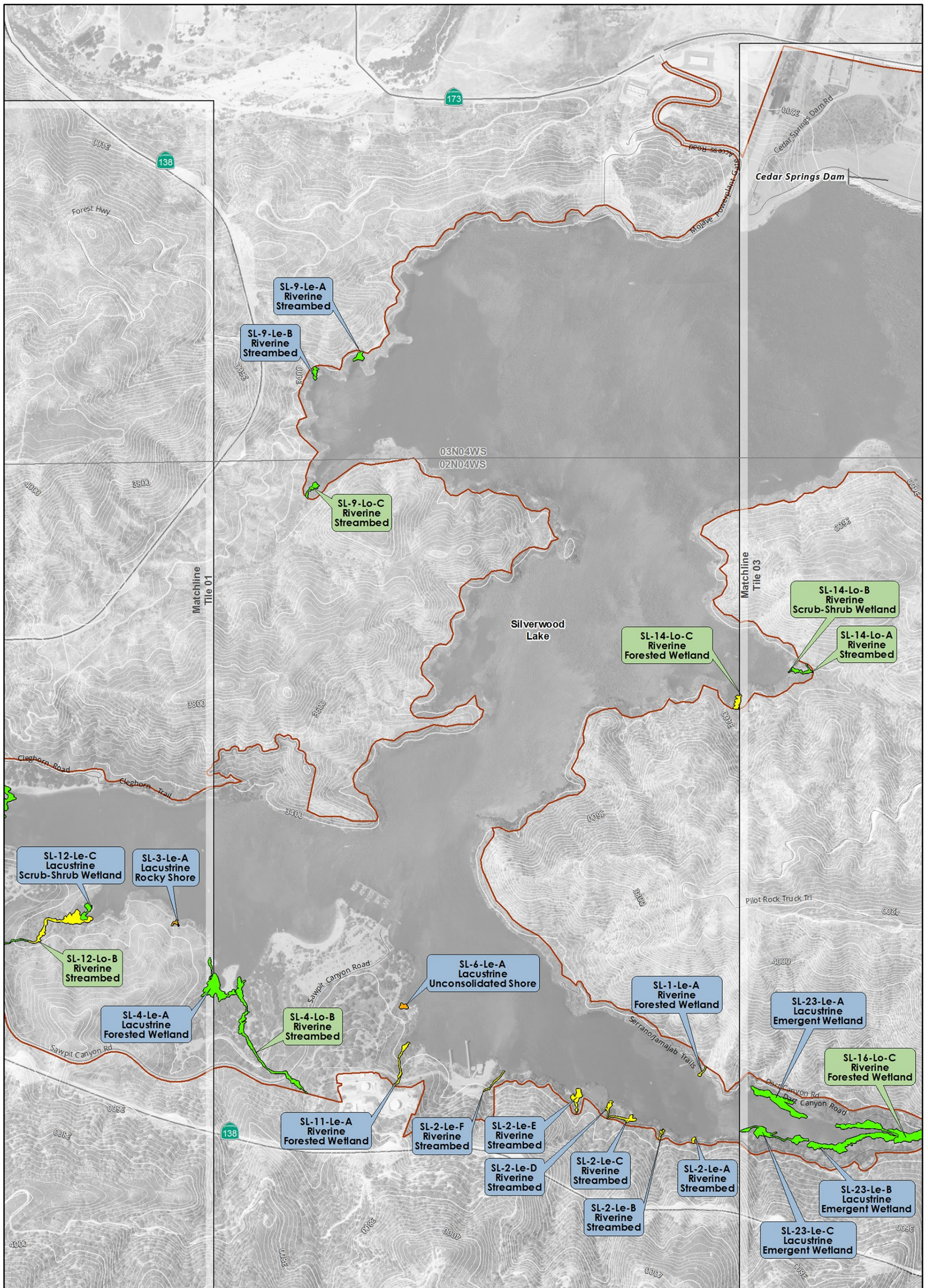
0 12,000 24,000 48,000 Feet  
 Prepared: September, 2017  
 Projection: NAD 1983 StatePlane California V FIPS 0405 Feet  
 Contours: 40ft (NAVD88)  
 Rare Plant Data: Stantec (2017)  
 Background: USGS EROS Ortho - 1ft  
 Study Plans\Wildf\_Bot\DC\_LenticLoticSurvey\_20170910.mxd

DEVIL CANYON PROJECT RELICENSING  
FERC PROJECT NO. 14797



**Wetland and Riparian  
Assessment  
DC Study Area  
2017 Assessment  
Map Tile: 01**





**Legend**

Devil Canyon Botanical Study Area


Lentic  
 Lotic

**Properly Functioning Condition (PFC) Rating**

Properly functioning condition  
 Functional - at risk  
 Nonfunctional

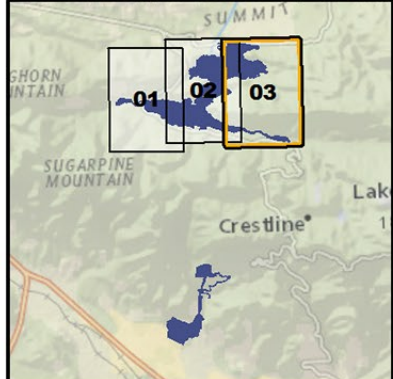
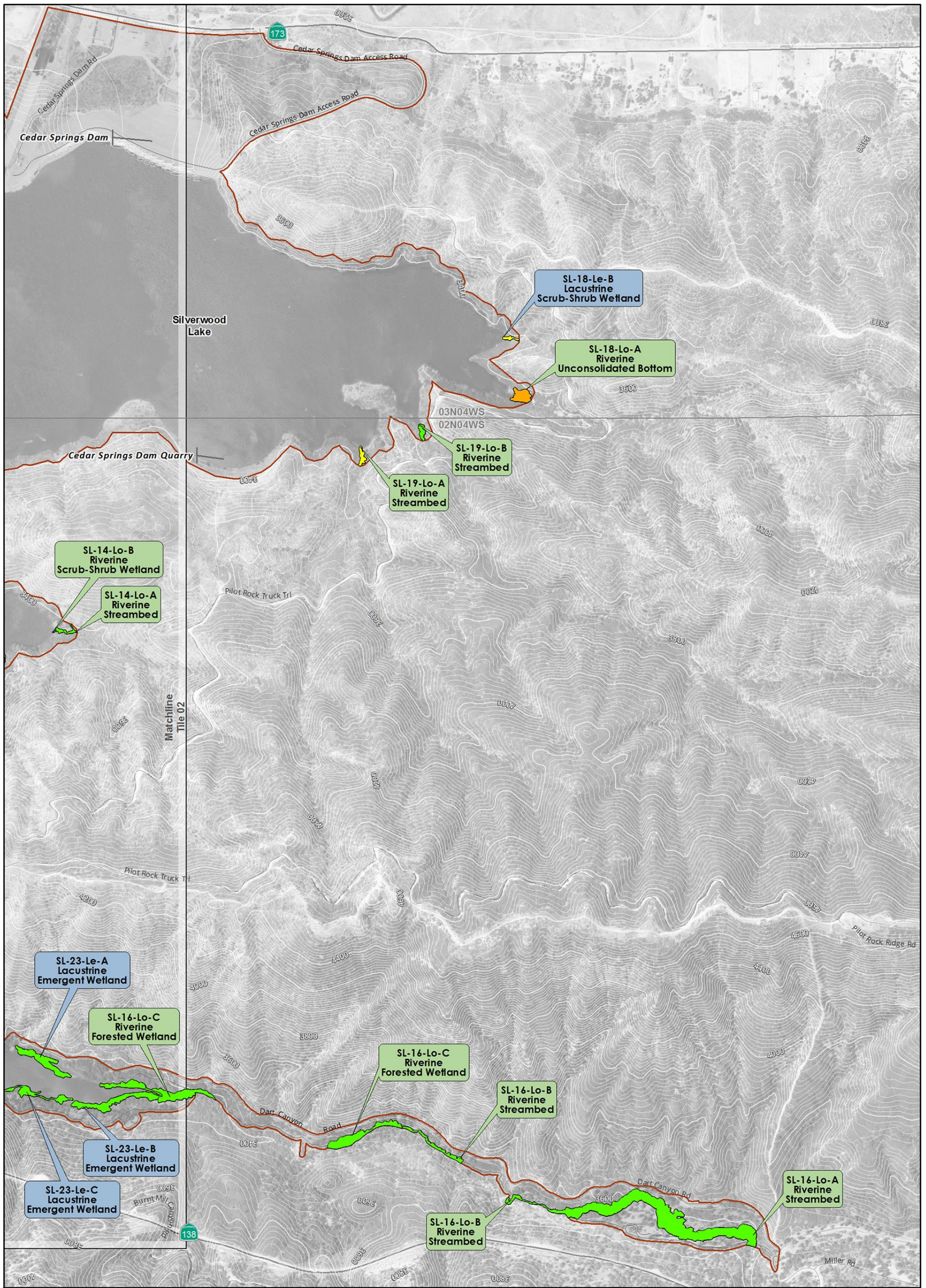
Prepared: September, 2017  
 Projection: NAD 1983 StatePlane California V FIPS 0405 Feet  
 Contours: 40ft (NAVD88)  
 Rare Plant Data: Stantec (2017)  
 Background: USGS EROS Ortho - 1ft  
 Study Plans\Wildf\_Bot\DC\_LenticLoticSurvey\_20170910.mxd

DEVIL CANYON PROJECT RELICENSING  
FERC PROJECT NO. 14797



**Wetland and Riparian  
Assessment  
DC Study Area  
2017 Assessment  
Map Tile: 02**





**Legend**


Devil Canyon Botanical Study Area

Properly Functioning Condition (PFC) Rating  
 Functional - at risk  
 Nonfunctional

Lentic  
 Lotic

0 12,000 24,000 48,000 Feet  
 Prepared: September, 2017  
 Projection: NAD 1983 StatePlane California V FIPS 0405 Feet  
 Contours: 40ft (NAVD88)  
 Rare Plant Data: Stantec (2017)  
 Background: USGS EROS Ortho - 1ft  
 Study Plans\Wildf\_Bot\DC\_LenticLoticSurvey\_20170910.mxd

DEVIL CANYON PROJECT RELICENSING  
FERC PROJECT NO. 14797



**Wetland and Riparian  
Assessment  
DC Study Area  
2017 Assessment  
Map Tile: 03**