

**Legend**

**Overall site/occurrence quality/viability (site + population):**

- Excellent
- Good
- Fair
- Poor

**Devil Canyon Botanical Study Area**

**US Forest Service Owned**

**NOTE<sup>1</sup>:** All locations meet California Native Plant Society Rare Plant Rank of 4.2 - Limited distribution, fairly endangered in CA.

**NOTE<sup>2</sup>:** Areas smaller than 130 ft<sup>2</sup> mapped as point locations.

0 12,000 24,000 48,000 Feet

Prepared: September, 2017  
 Projection: NAD 1983 StatePlane California V FIPS 0405 Feet  
 Contours: 40ft (NAVD88)  
 Rare Plant Data: Stantec (2017)  
 Background: USGS EROS Ortho - 1ft

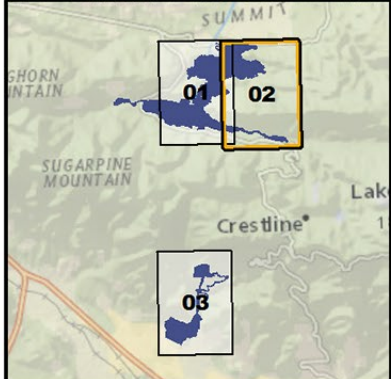
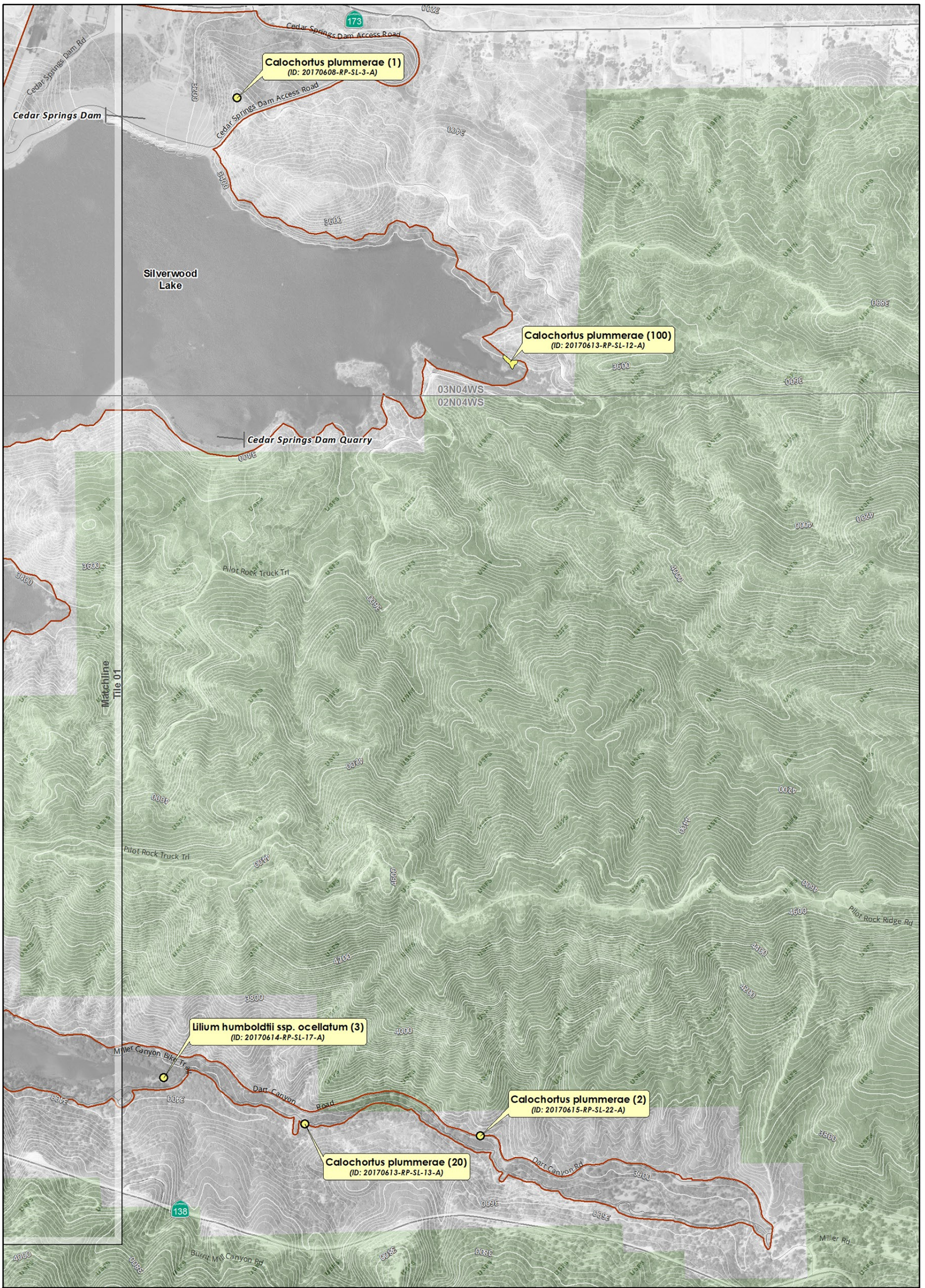
G:\DWR\ICAA\_P14797\_MXDs\_Study\_Plans\Wildif\_Bot\DC\_ESA\_Plants\_20170831.mxd

DEVIL CANYON PROJECT RELICENSING  
FERC PROJECT NO. 14797

**Botanical Resources Study  
Special-Status Plant  
Occurrences Identified  
During 2017 Field Surveys**

**Map Tile: 01**





**Legend**

**Overall site/occurrence quality/viability (site + population):**

- Excellent
- Good
- Fair
- Poor

**Devil Canyon Botanical Study Area**

**US Forest Service Owned**

**NOTE<sup>1</sup>:** All locations meet California Native Plant Society Rare Plant Rank of 4.2 - Limited distribution, fairly endangered in CA.


**NOTE<sup>2</sup>:** Areas smaller than 130 ft<sup>2</sup> mapped as point locations.

0 12,000 24,000 48,000 Feet

Prepared: September, 2017  
 Projection: NAD 1983 StatePlane California V FIPS 0405 Feet  
 Contours: 40ft (NAVD88)  
 Rare Plant Data: Stantec (2017)  
 Background: USGS EROS Ortho - 1ft

G:\DWR\ICAA\_P14797\MXD\Study\_Plans\Wildif\_Bot\DC\_ESA\_Plants\_20170831.mxd

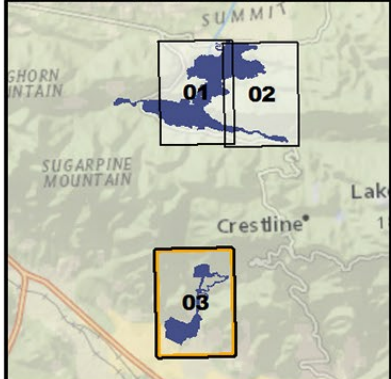
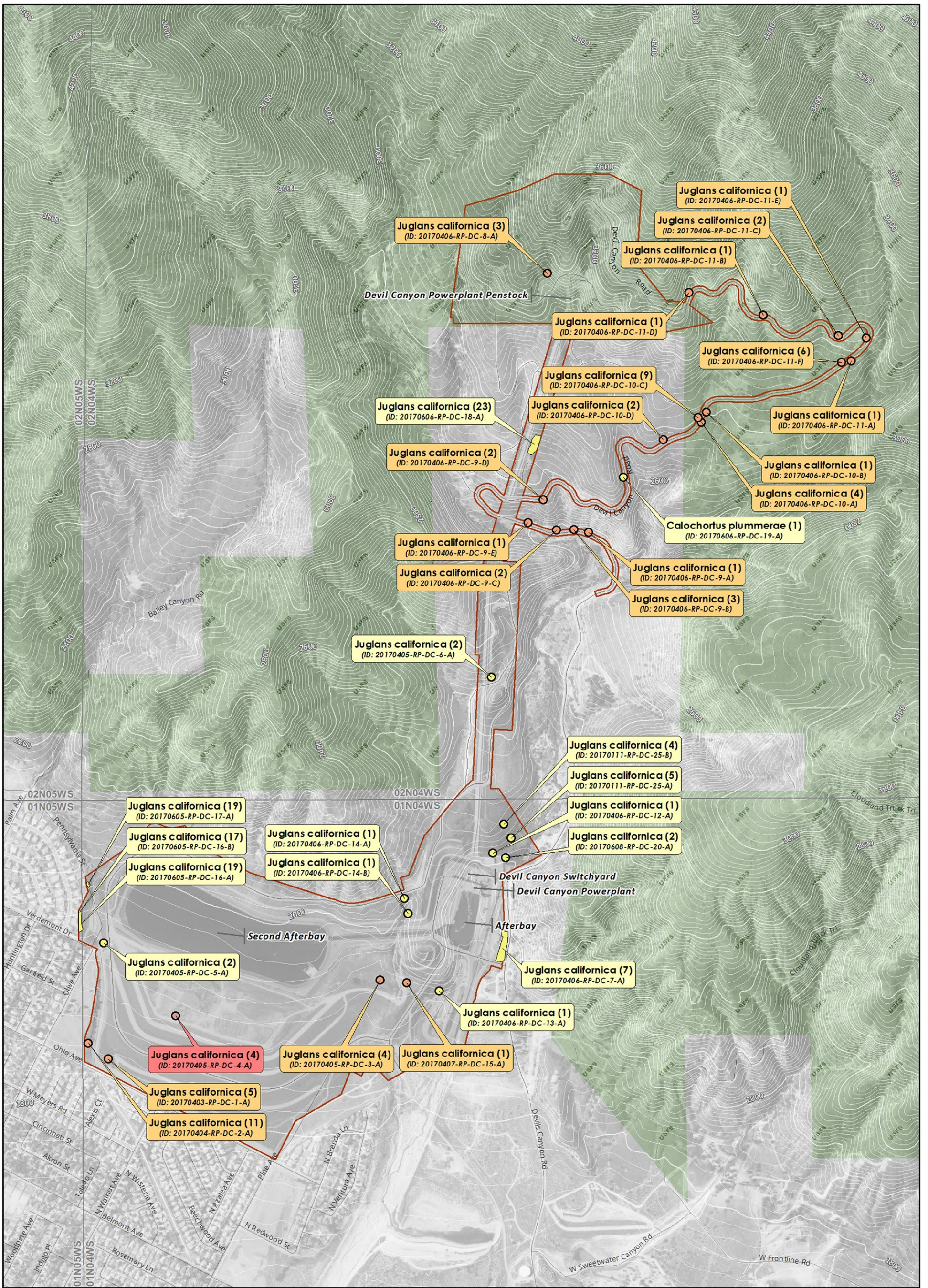
DEVIL CANYON PROJECT RELICENSING  
FERC PROJECT NO. 14797



**Botanical Resources Study  
Special-Status Plant  
Occurrences Identified  
During 2017 Field Surveys**

**Map Tile: 02**





**Legend**

**Overall site/occurrence quality/viability (site + population):**

- Excellent
- Good
- Fair
- Poor

*NOTE<sup>1</sup>: All locations meet California Native Plant Society Rare Plant Rank of 4.2 - Limited distribution, fairly endangered in CA.*

*NOTE<sup>2</sup>: Areas smaller than 130 ft<sup>2</sup> mapped as point locations.*


- Devil Canyon Botanical Study Area
- US Forest Service Owned

0 12,000 24,000 48,000 Feet

Prepared: September, 2017  
 Projection: NAD 1983 StatePlane California V FIPS 0405 Feet  
 Contours: 40ft (NAVD88)  
 Rare Plant Data: Stantec (2017)  
 Background: USGS EROS Ortho - 1ft

G:\DWR\ICAA\_P14797\_MXD\Study\_Plans\Wildf\_Bot\DC\_ESA\_Plants\_20170831.mxd

DEVIL CANYON PROJECT RELICENSING  
FERC PROJECT NO. 14797



**Botanical Resources Study  
Special-Status Plant  
Occurrences Identified  
During 2017 Field Surveys**

**Map Tile: 03**