

Legend

Site/Occurrence Density - Distribution (C:D - D:W)

- Concentrated - Discrete
- Concentrated - Widespread
- Diffuse - Discrete
- Diffuse - Widespread
- Diffuse - N/A

Devil Canyon Botanical Study Area


US Forest Service Owned

0 500 1,000 2,000 Feet

Prepared: September, 2017
 Projection: NAD 1983 StatePlane California V FIPS 0405 Feet
 Contours: 40ft (NAVD88)
 Rare Plant Data: Stantec (2017)
 Background: USGS EROS Ortho - 1ft

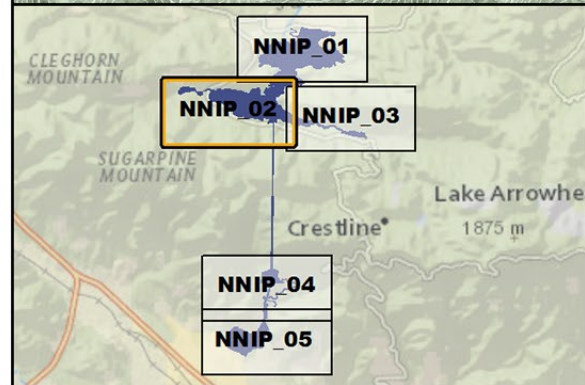
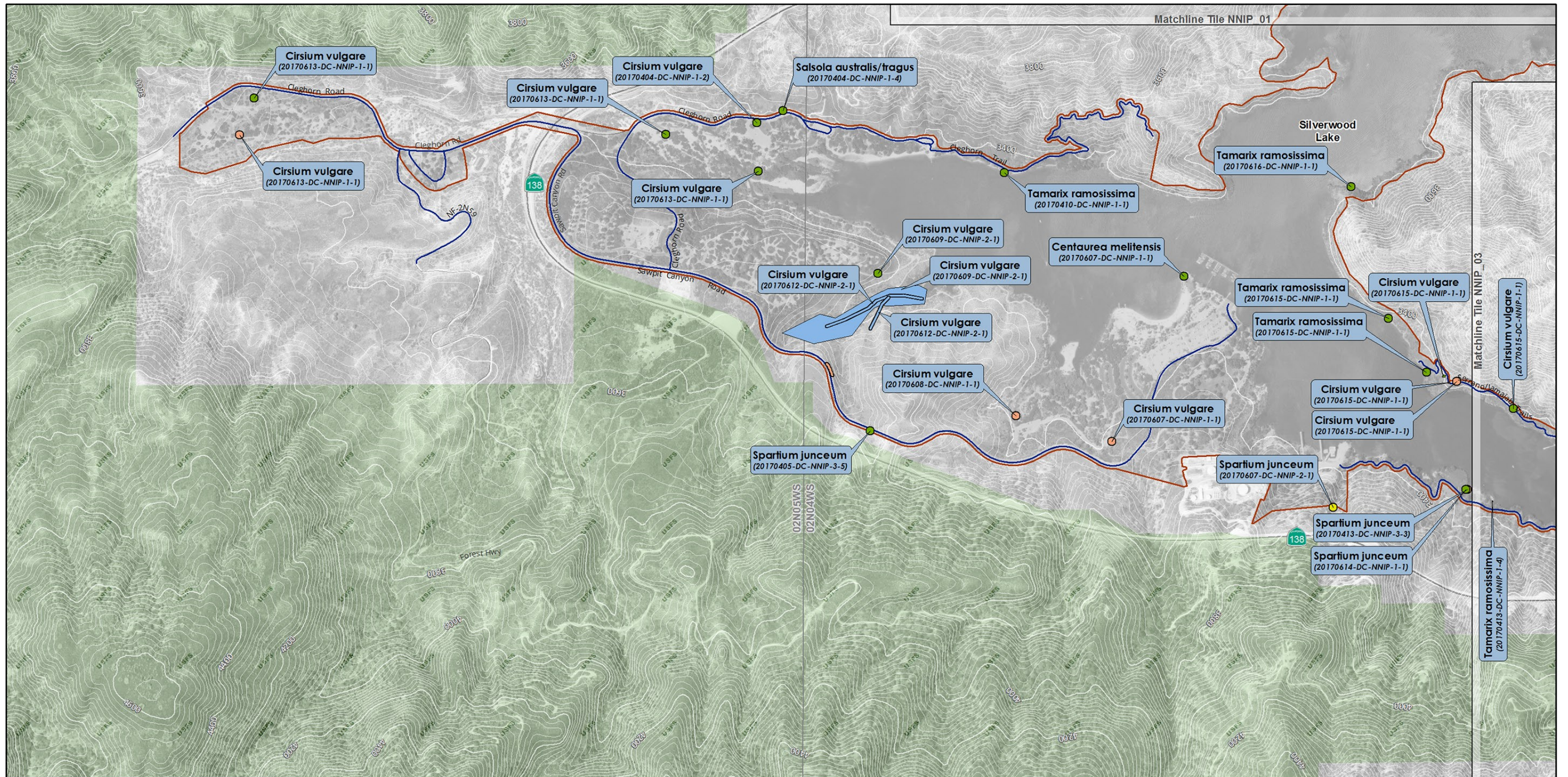
G:\DWR\ICAA_P147971_MXDsl_Study_Plans\Wildlf_Bot\DC_NNIP_20170910.mxd

DEVIL CANYON PROJECT RELICENSING
FERC PROJECT NO. 14797



**Botanical Resources Study
Non-Native Invasive Plant
Occurrences Identified
During 2017 Field Surveys**

Map Tile: NNIP_01



Legend

Site/Occurrence Density - Distribution (C:D - D:W)

	Concentrated - Discrete
	Concentrated - Widespread
	Diffuse - Discrete
	Diffuse - Widespread
	Diffuse - N/A

Devil Canyon Botanical Study Area

US Forest Service Owned

0 500 1,000 2,000 Feet

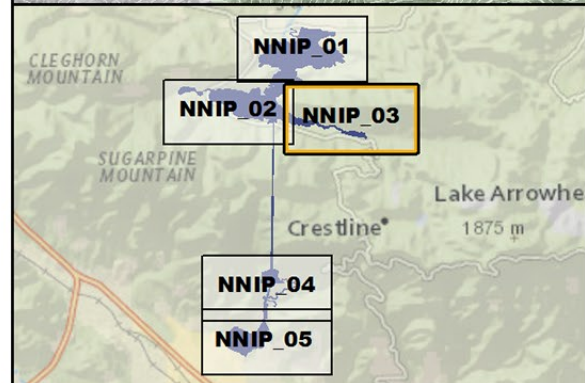
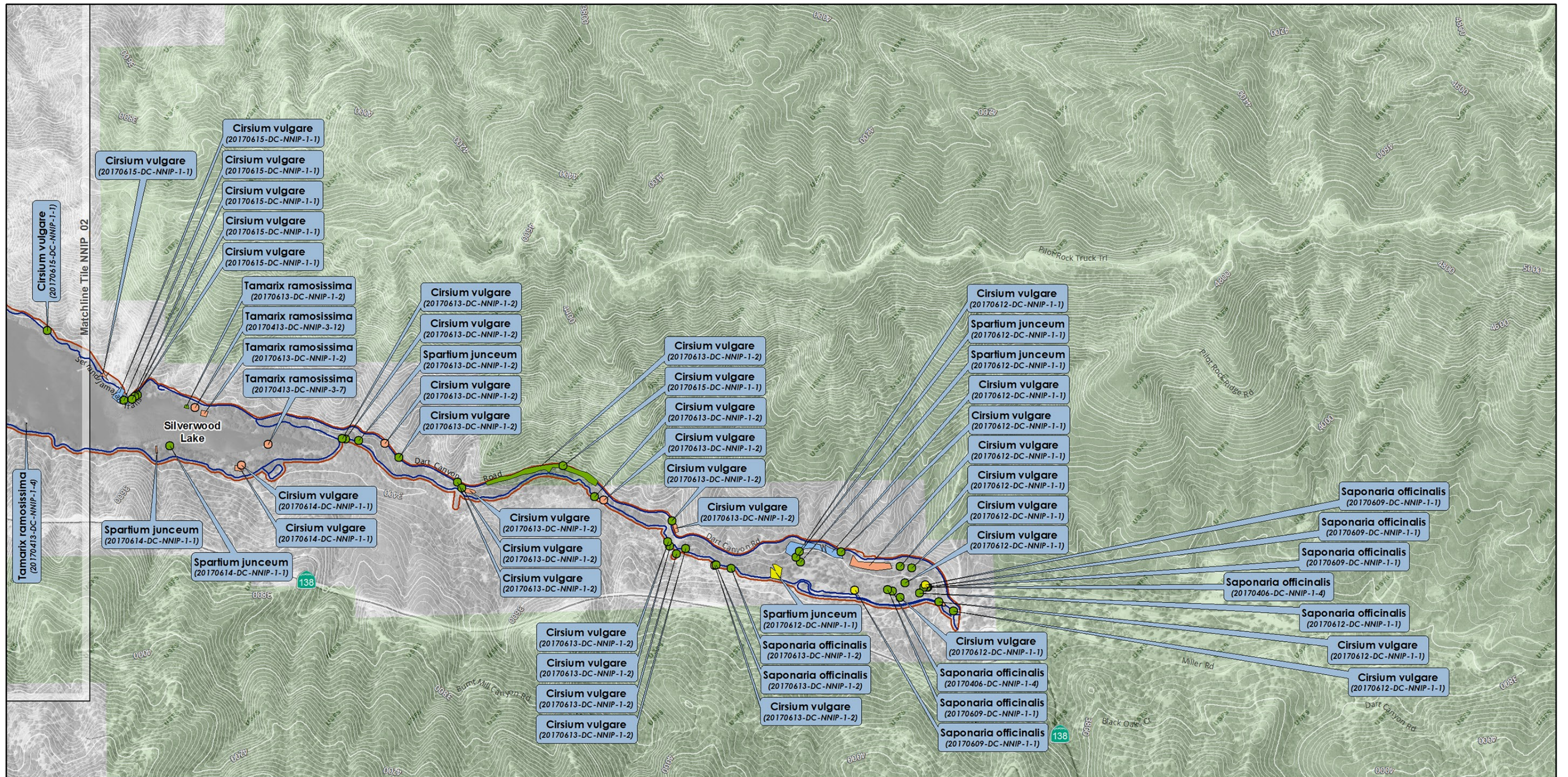
Prepared: September, 2017
 Projection: NAD 1983 StatePlane California V FIPS 0405 Feet
 Contours: 40ft (NAVD88)
 Rare Plant Data: Stantec (2017)
 Background: USGS EROS Ortho - 1ft

G:\DWR\CAA_P14797\MXDsl_Study_Plans\Wildf_Bot\DC_NNIP_20170910.mxd

DEVIL CANYON PROJECT RELICENSING
FERC PROJECT NO. 14797

**Botanical Resources Study
Non-Native Invasive Plant
Occurrences Identified
During 2017 Field Surveys**

Map Tile: NNIP_02



Legend

Site/Occurrence Density - Distribution (C:D - D:W)

- Concentrated - Discrete
- Concentrated - Widespread
- Diffuse - Discrete
- Diffuse - Widespread
- Diffuse - N/A

Devil Canyon Botanical Study Area


US Forest Service Owned

0 500 1,000 2,000 Feet

Prepared: September, 2017
 Projection: NAD 1983 StatePlane California V FIPS 0405 Feet
 Contours: 40ft (NAVD88)
 Rare Plant Data: Stantec (2017)
 Background: USGS EROS Ortho - 1ft

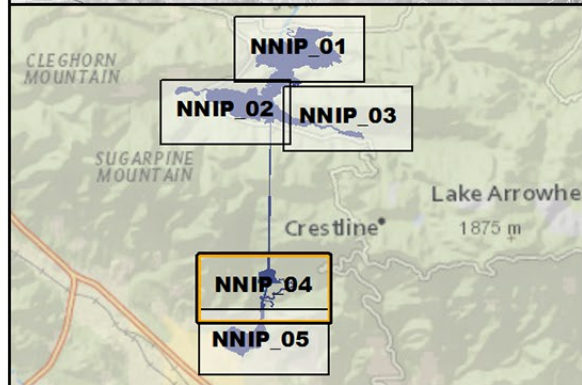
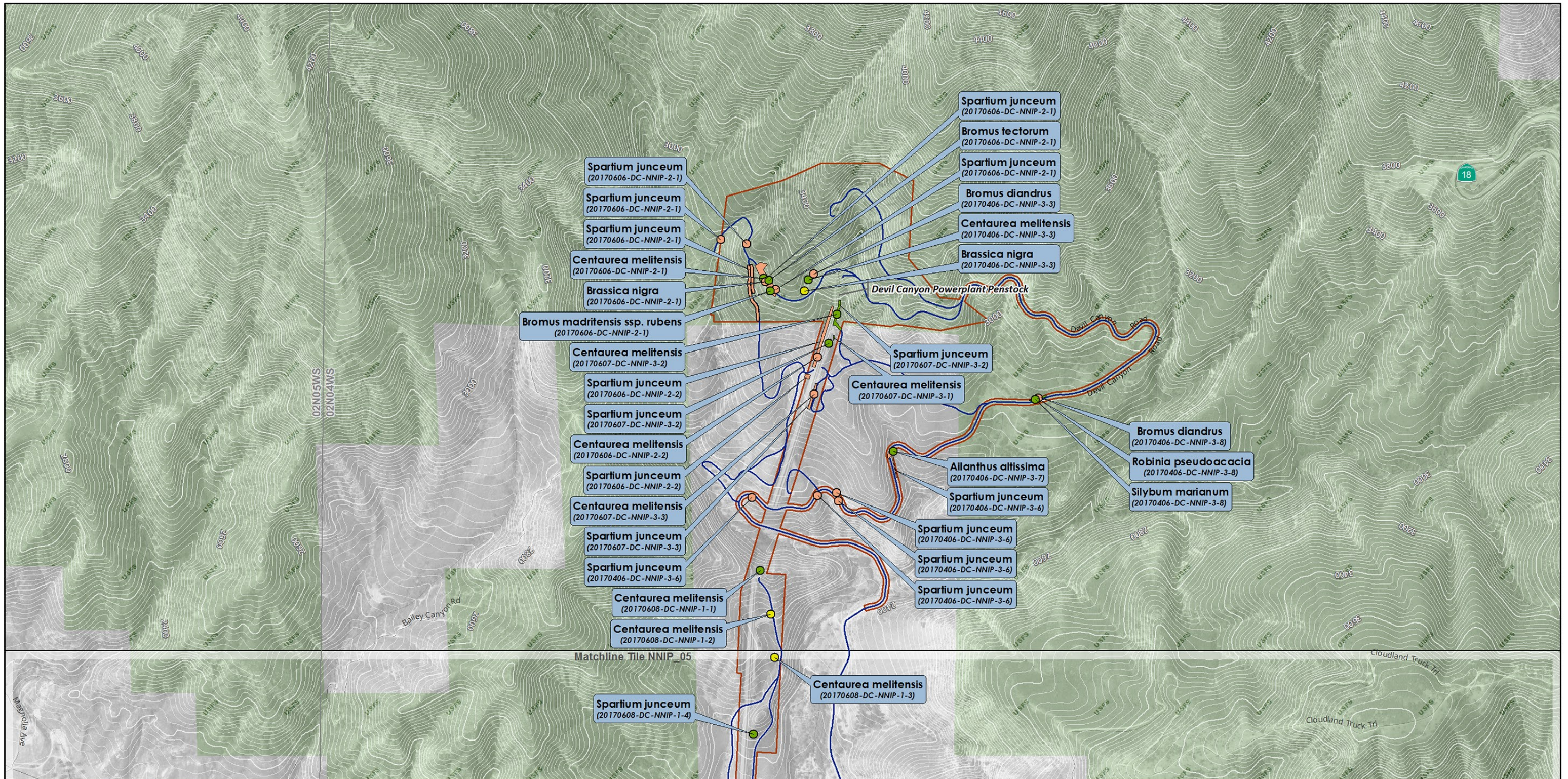
G:\DWR\ICAA_P14797_MXDsl_Study_Plans\Wildf_Bot\DC_NNIP_20170910.mxd

DEVIL CANYON PROJECT RELICENSING
FERC PROJECT NO. 14797



**Botanical Resources Study
Non-Native Invasive Plant
Occurrences Identified
During 2017 Field Surveys**

Map Tile: NNIP_03



Legend

Site/Occurrence Density - Distribution (C:D - D:W)

- Concentrated - Discrete (Green circle)
- Concentrated - Widespread (Yellow circle)
- Diffuse - Discrete (Orange circle)
- Diffuse - Widespread (Blue circle)
- Diffuse - N/A (Purple circle)

- Devil Canyon Botanical Study Area (Orange outline)
- US Forest Service Owned (Green shaded area)

0 500 1,000 2,000 Feet

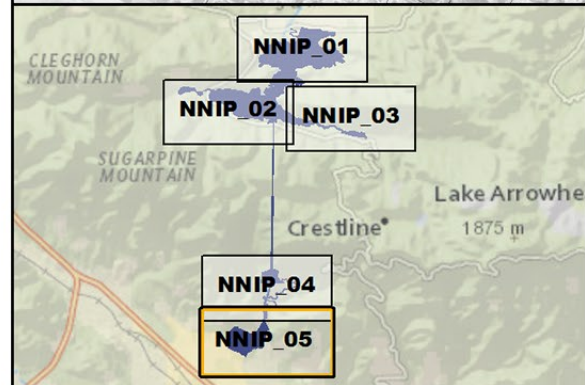
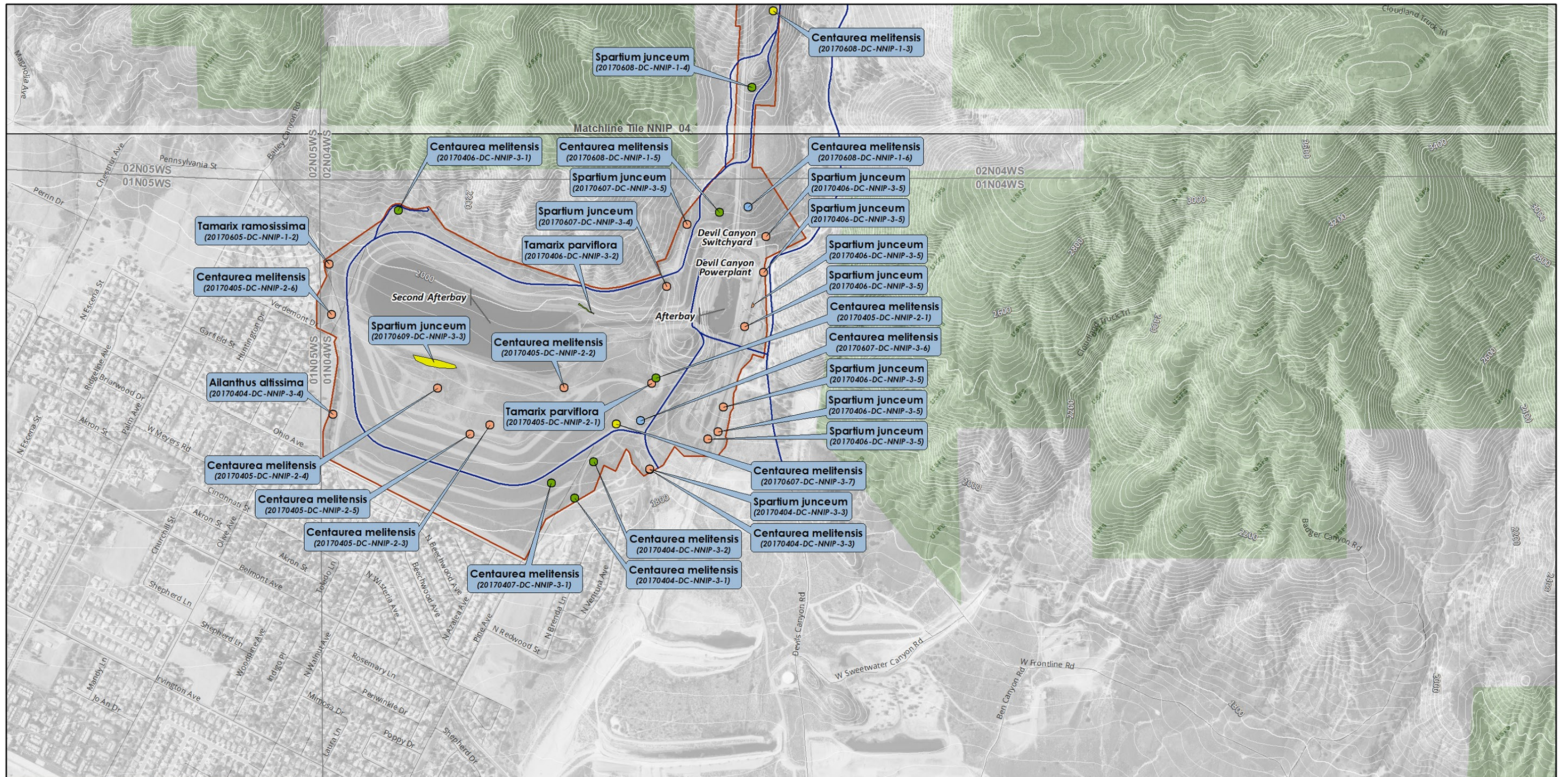
Prepared: September, 2017
 Projection: NAD 1983 StatePlane California V FIPS 0405 Feet
 Contours: 40ft (NAVD88)
 Rare Plant Data: Stantec (2017)
 Background: USGS EROS Ortho - 1ft

G:\DWR\ICAA_P14797\MXDsl_Study_Plans\Wildf_Bot\DC_NNIP_20170910.mxd

DEVIL CANYON PROJECT RELICENSING
FERC PROJECT NO. 14797

**Botanical Resources Study
Non-Native Invasive Plant
Occurrences Identified
During 2017 Field Surveys**

Map Tile: NNIP_04



Legend

Site/Occurrence Density - Distribution (C:D - D:W)

- Concentrated - Discrete
- Concentrated - Widespread
- Diffuse - Discrete
- Diffuse - Widespread
- Diffuse - N/A

Devil Canyon Botanical Study Area


US Forest Service Owned

0 500 1,000 2,000 Feet

Prepared: September, 2017
 Projection: NAD 1983 StatePlane California V FIPS 0405 Feet
 Contours: 40ft (NAVD88)
 Rare Plant Data: Stantec (2017)
 Background: USGS EROS Ortho - 1ft

G:\DWR\ICAA_P147971_MXDsl_Study_Plans\Wildf_Bot\DC_NNIP_20170910.mxd

DEVIL CANYON PROJECT RELICENSING
FERC PROJECT NO. 14797



**Botanical Resources Study
Non-Native Invasive Plant
Occurrences Identified
During 2017 Field Surveys**

Map Tile: NNIP_05